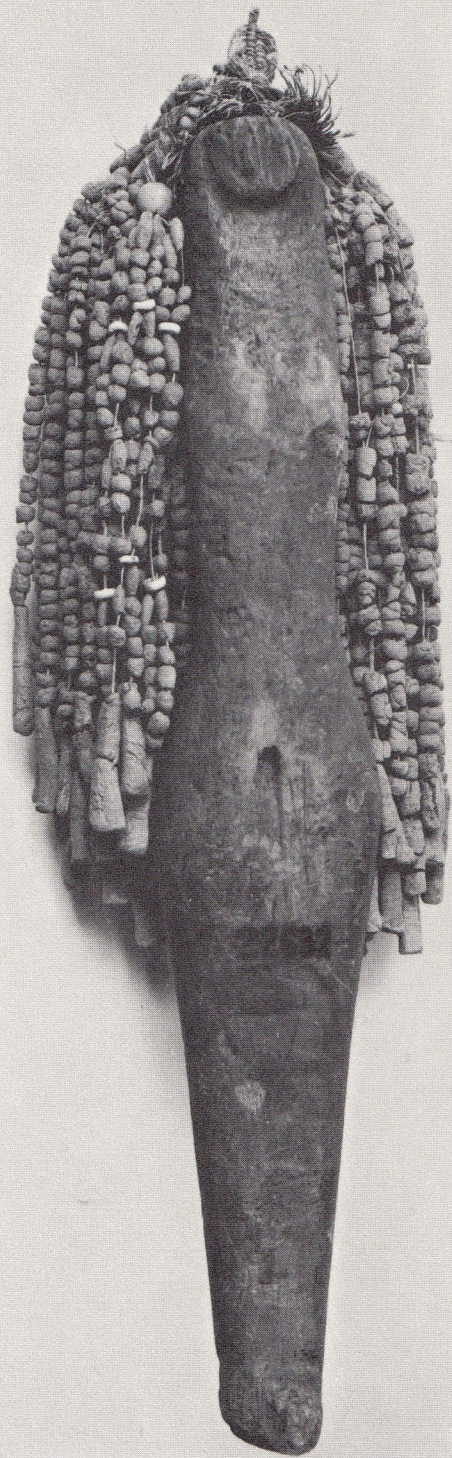




1 Egyptian paddle-shaped dolls
of 2000 BC; 7½-10 inches



were accompanied by some such inscription as: 'If - [the dead man] is detailed for any tasks in the underworld, then say thou O Shabti "Here am I"'.
 Figure 2 shows a wooden doll with arms jointed at the shoulder and made a hundred years or so later than the paddle dolls. The fact that