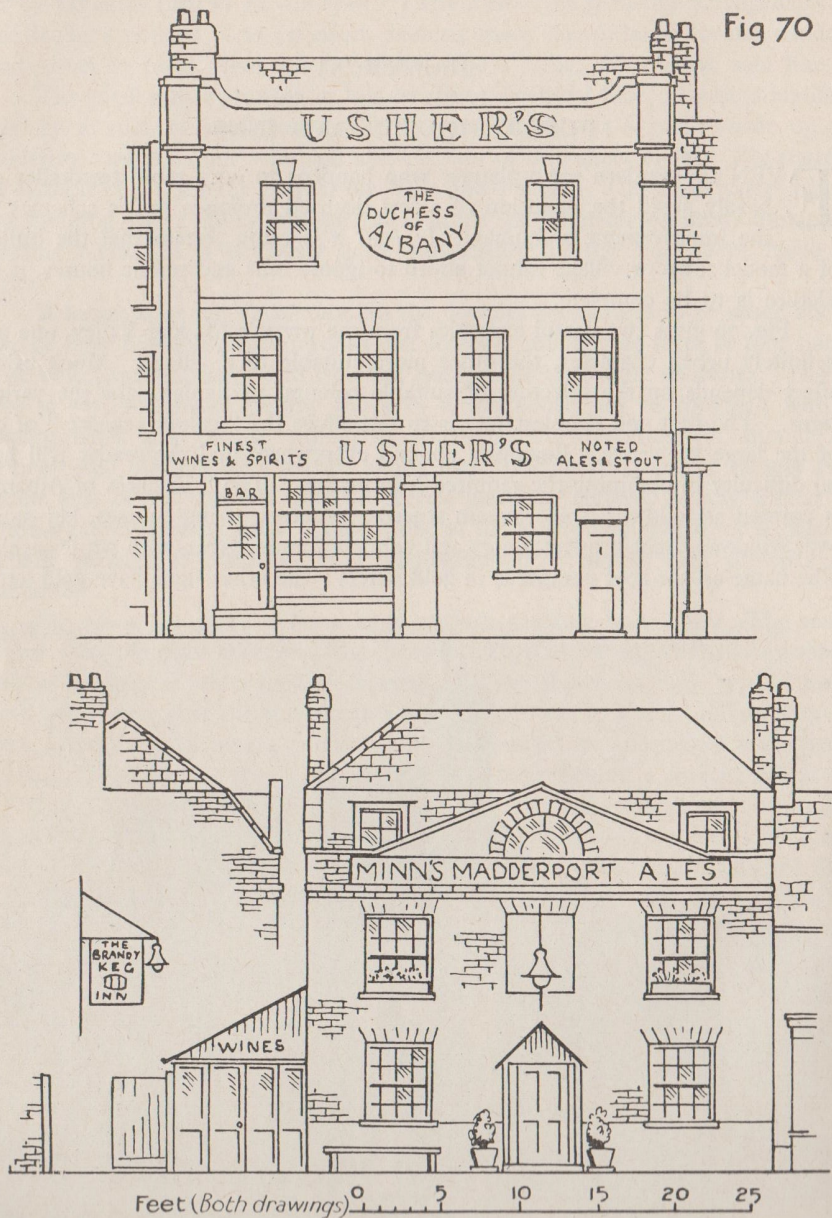
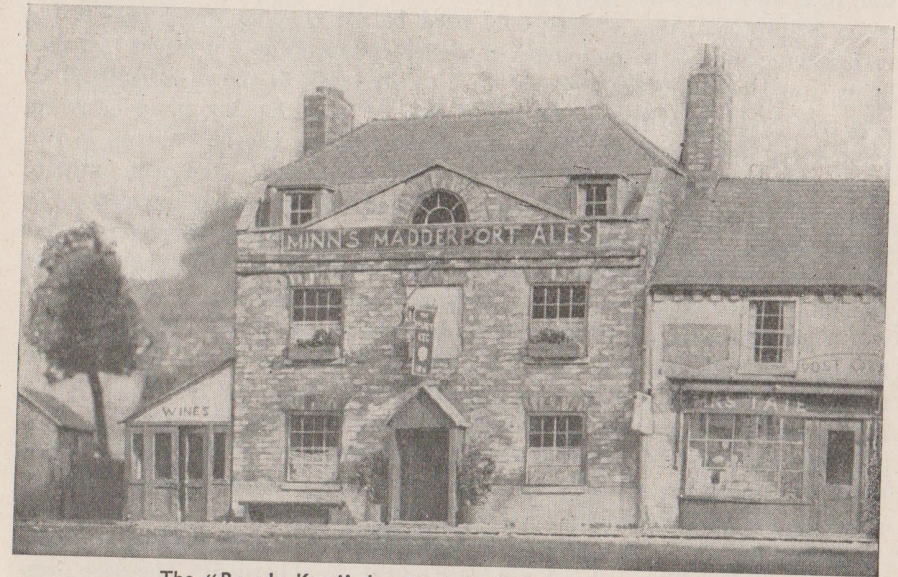


Fig 70



on a green ground with a gold border. Gold will probably have to be represented by yellow paint. The large window next to the bar entrance can be decorated with barrels, price lists, and display cards advertising brands of wine or spirit.

The "Brandy Keg" will look best if it can be arranged to face a village green; it should be flanked by cottages and small eighteenth century houses. Unlike the "Duchess of Albany," which is an example of low-relief work, it is fully built up and has a yard with stables, now, no doubt, used to garage cars, and other outbuildings. The yard is entered by the gates on the left at the side of the timber addition labelled "Wines." The walls should be brown brick; the blind window above the door is a recessed panel of cream stucco; door and windows, porch, which should have open trellis-work sides, tubs, bench, window



The "Brandy Keg," drawings of which are given in Fig. 70

boxes, and the hanging lamp (see detail of sign) are green. The front of the wine bar is brown, with vertical boarding painted light stone above the framed and panelled part and at the side and back. Notice that, although the front appears in the drawing to be composed of four identical doors, only the middle pair are hinged and the outer two are fixed. The word "Wines" should be painted in brown to match the doors. The roof is slate with red tile ridging; the sign on the parapet is in gold letters on a green ground. If the letters can be shaded in red, the effect will, no doubt, be improved.

The shrubs are carefully cut scraps of loofah glued into holes drilled in shaped blocks of wood which form the tubs.